

MONTHLY MEMBERSHIP PROGRESS REPORT

LOCATION BRITISH COLUMBIA

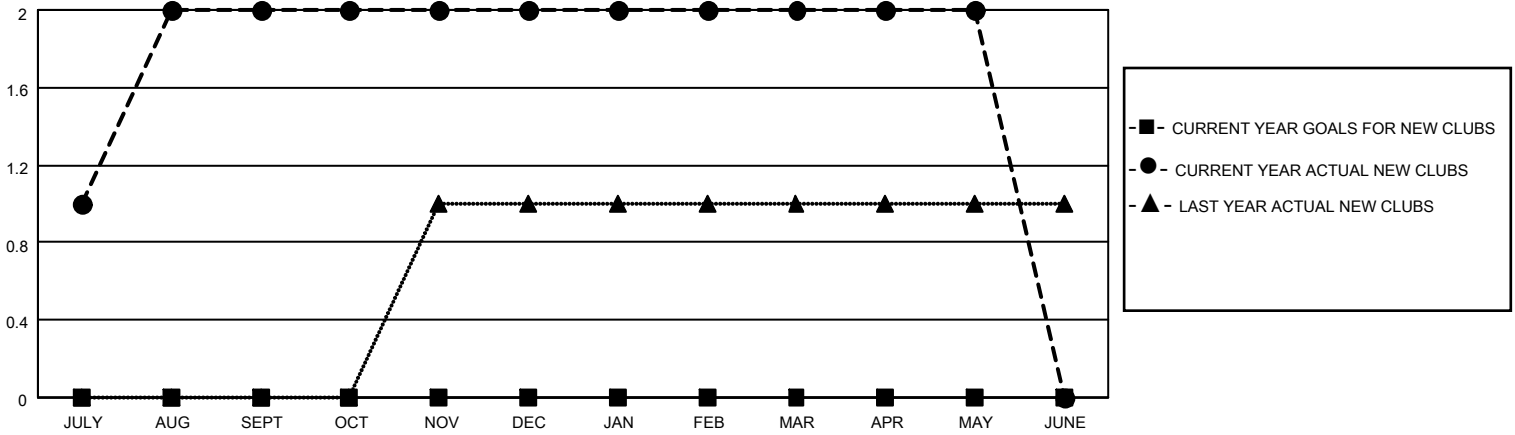
District 19 A

Results as of: 5/31/2021

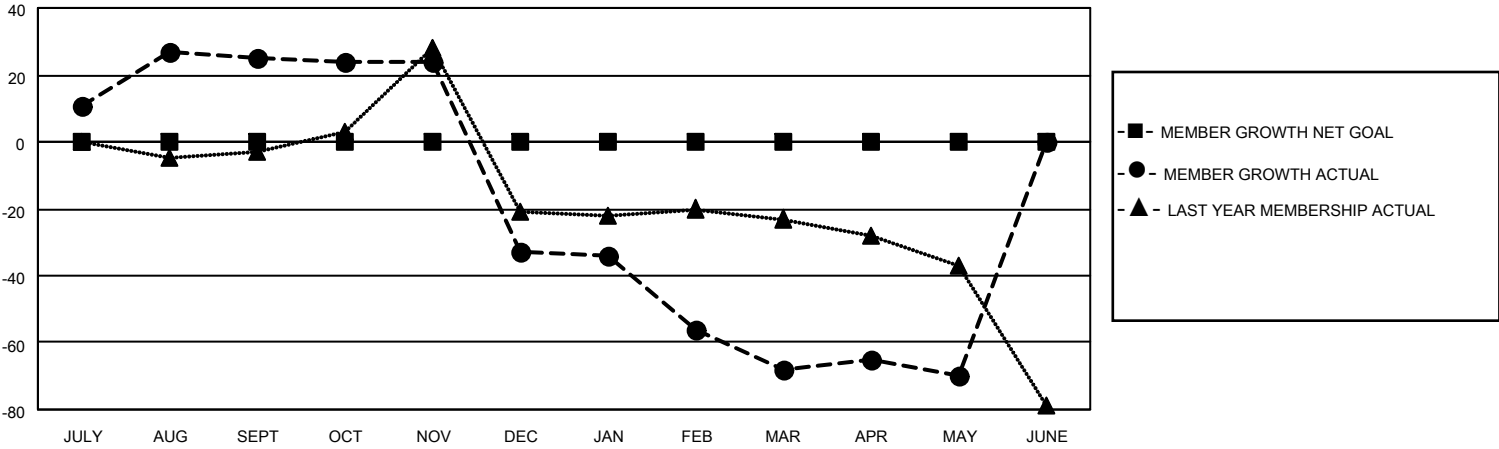
Clubs			
RESULTS FOR 2020-2021			
QUARTER	NEW CLUB GOAL	NEW CLUBS	DROPPED CLUBS
JULY/AUG/SEPT	0	2	0
OCT/NOV/DEC	0	0	2
JAN/FEB/MAR	0	0	2
APR/MAY/JUNE	0	0	0

Members			
RESULTS FOR 2020-2021			
QUARTER	MEMBER GROWTH NET GOAL	MEMBER GROWTH ACTUAL	DROPPED MEMBERS ACTUAL (including transfers)
JULY/AUG/SEPT	0	60	30
OCT/NOV/DEC	0	12	68
JAN/FEB/MAR	0	20	48
APR/MAY/JUNE	0	9	8

GOALS AND ACTUAL NEW CLUBS CUMULATIVE



GOALS AND ACTUAL MEMBERS CUMULATIVE



DROPPED CLUBS: 4

21 CLUBS OF 52 ADDED 1 OR MORE NEW MEMBERS

GENDER DISTRIBUTION

MALE 540 (51.23%)
FEMALE 514 (48.77%)

DROPPED MEMBERS

DECEASED	13
CLUB CANCELLED	41
OTHER	100
TOTAL	154

[CLICK HERE FOR CUMULATIVE MEMBERSHIP DATA](#)

TOTAL FAMILY UNIT MEMBERS	79
FAMILY MEMBERS PAYING HALF DUES	41